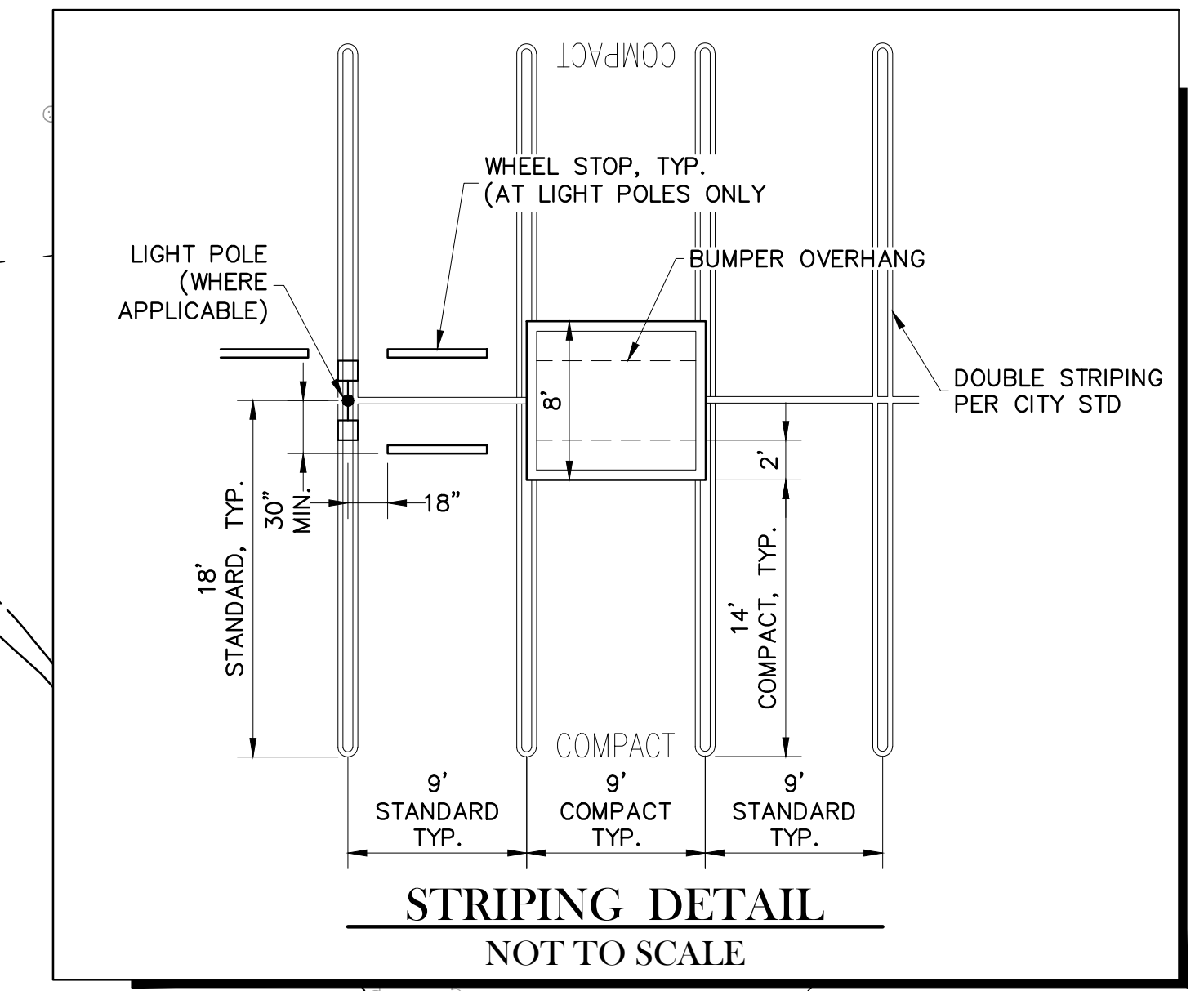
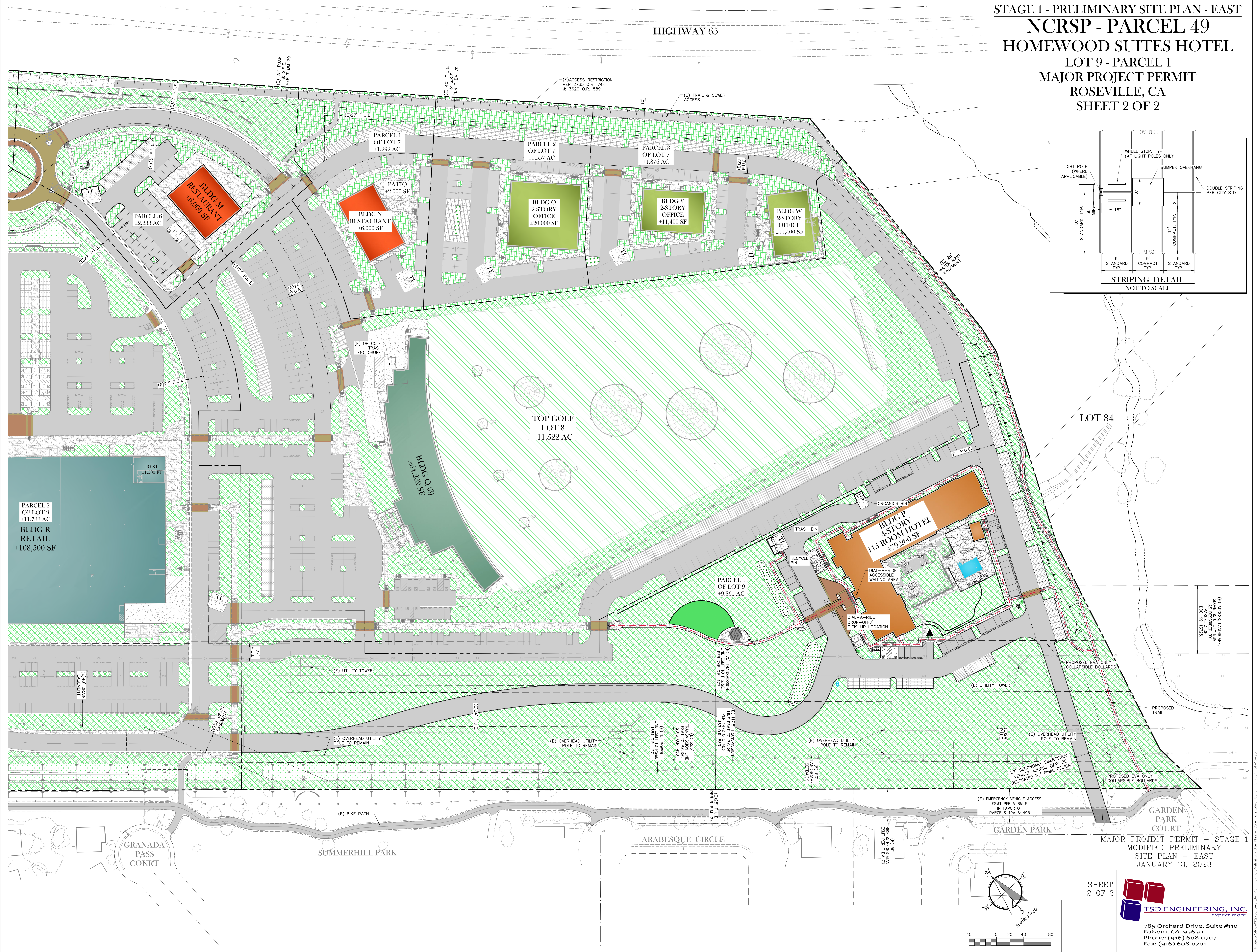


STAGE 1 - PRELIMINARY SITE PLAN - EAST
NCRSP - PARCEL 49
HOMEWOOD SUITES HOTEL
 LOT 9 - PARCEL 1
 MAJOR PROJECT PERMIT
 ROSEVILLE, CA
 SHEET 2 OF 2



LOT 84

(E) ACCESS, LANDSCAPE, SIGN & UTILITY EASEMENT PER PARCEL 49 OF DOC. 98-13325

PROPOSED EVA ONLY COLLAPSIBLE BOLLARDS

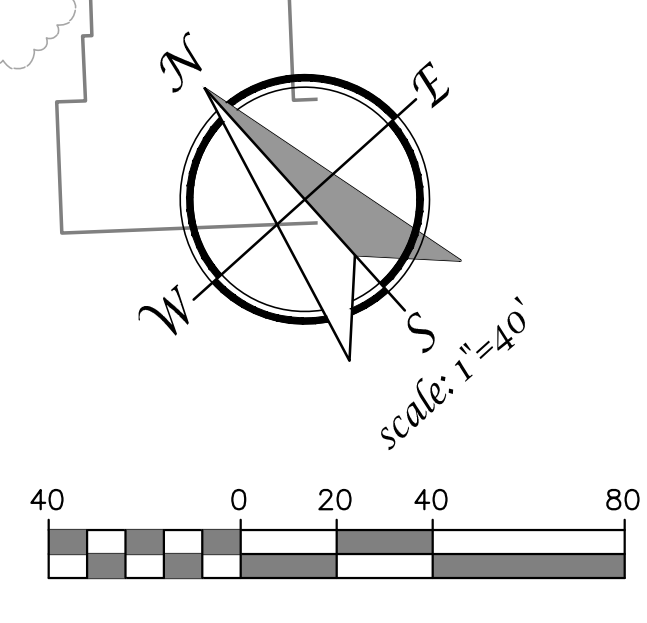
PROPOSED TRAIL

27' SECONDARY EMERGENCY VEHICLE ACCESS (MAY BE RELOCATED W/ FINAL DESIGN)

(E) EMERGENCY VEHICLE ACCESS ESMT PER V.B.M. 5 IN FAVOR OF PARCELS 49A & 49B

MAJOR PROJECT PERMIT - STAGE 1
 MODIFIED PRELIMINARY
 SITE PLAN - EAST
 JANUARY 13, 2023

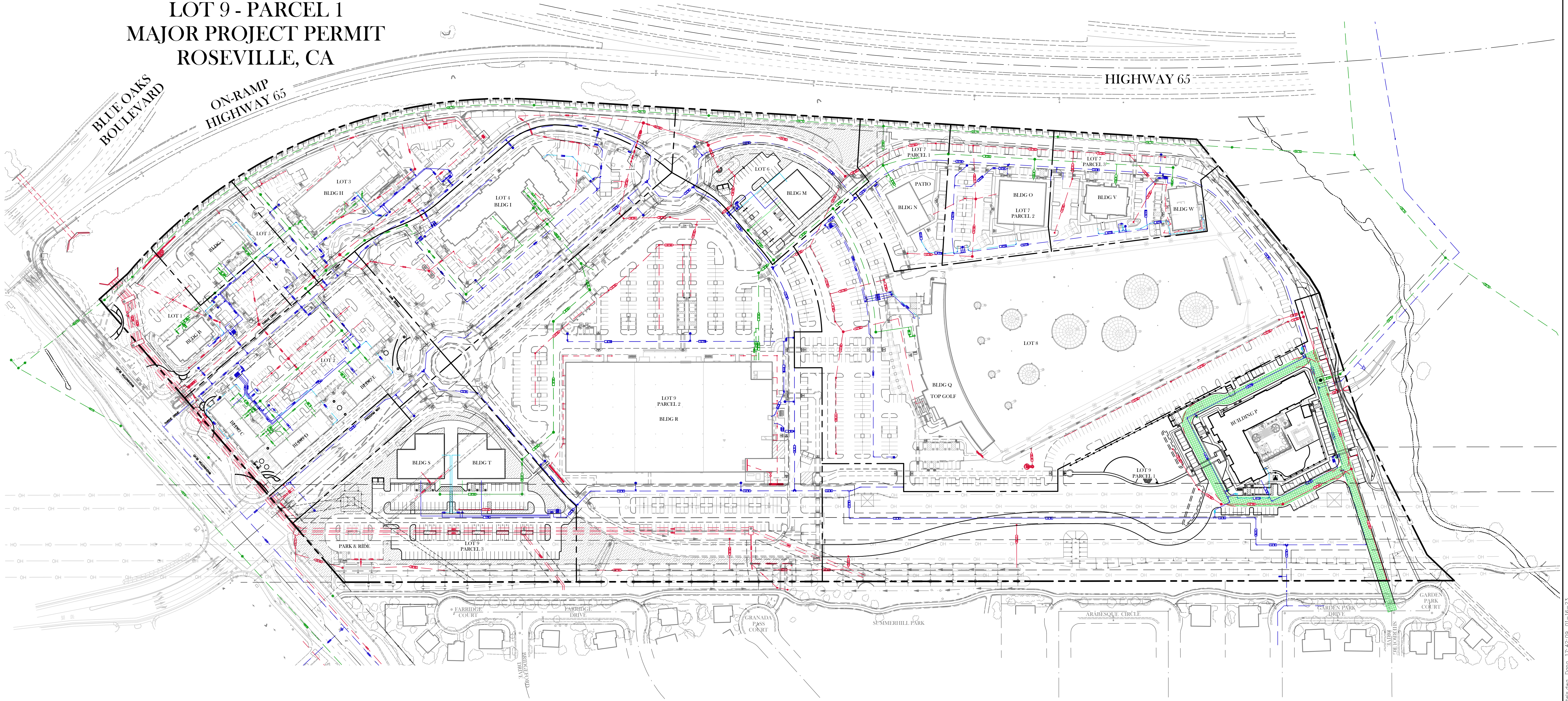
SHEET
 2 OF 2



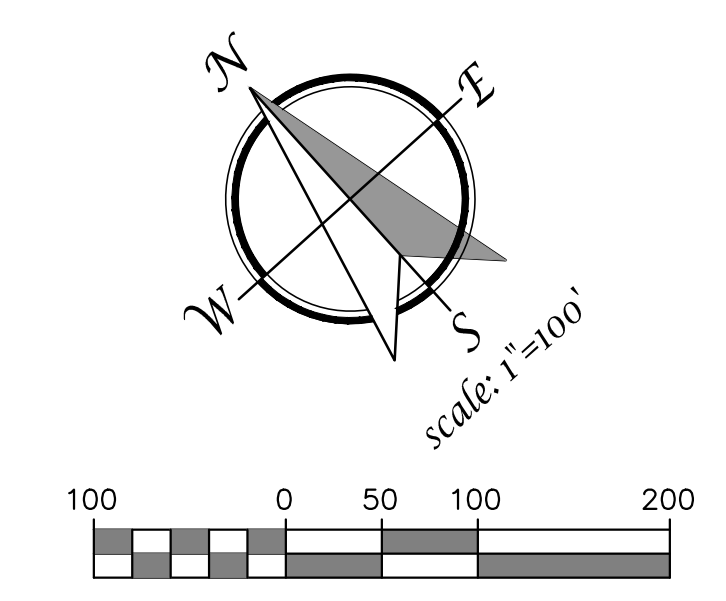
TSD ENGINEERING, INC.
 expect more.
 785 Orchard Drive, Suite #110
 Folsom, CA 95630
 Phone: (916) 608-0707
 Fax: (916) 608-0701

P:\Projects\498-002\02 - DWG\01 - Preliminary\Site Plan - Core\1080000.dwg, 1/14/23, 09:42:23

STAGE 1 - PRELIMINARY SITE PLAN
NCRSP - PARCEL 49
HOMEWOOD SUITES HOTEL
 LOT 9 - PARCEL 1
 MAJOR PROJECT PERMIT
 ROSEVILLE, CA



PRELIMINARY UTILITY PLAN
 JANUARY 13, 2023



TSD ENGINEERING, INC.
 expect more.

785 Orchard Drive, Suite #110
 Folsom, CA 95630
 Phone: (916) 608-0707
 Fax: (916) 608-0701

P:\Projects\468-002\02 DWG\B- Planning\06\Preliminary Utility Plan - Core Hotels.dwg, Date: 17:42:09, 01-16-23